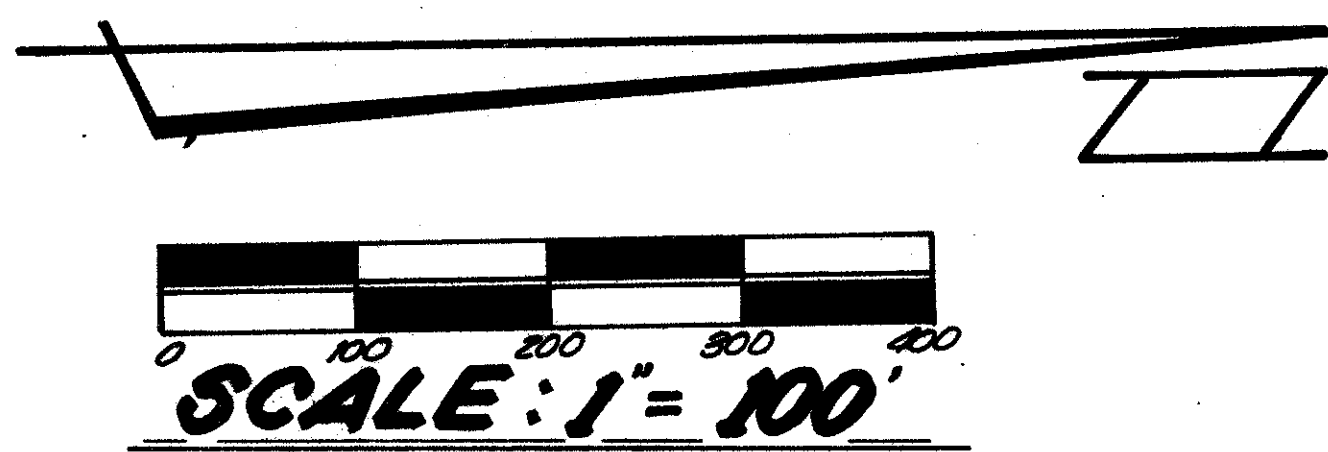
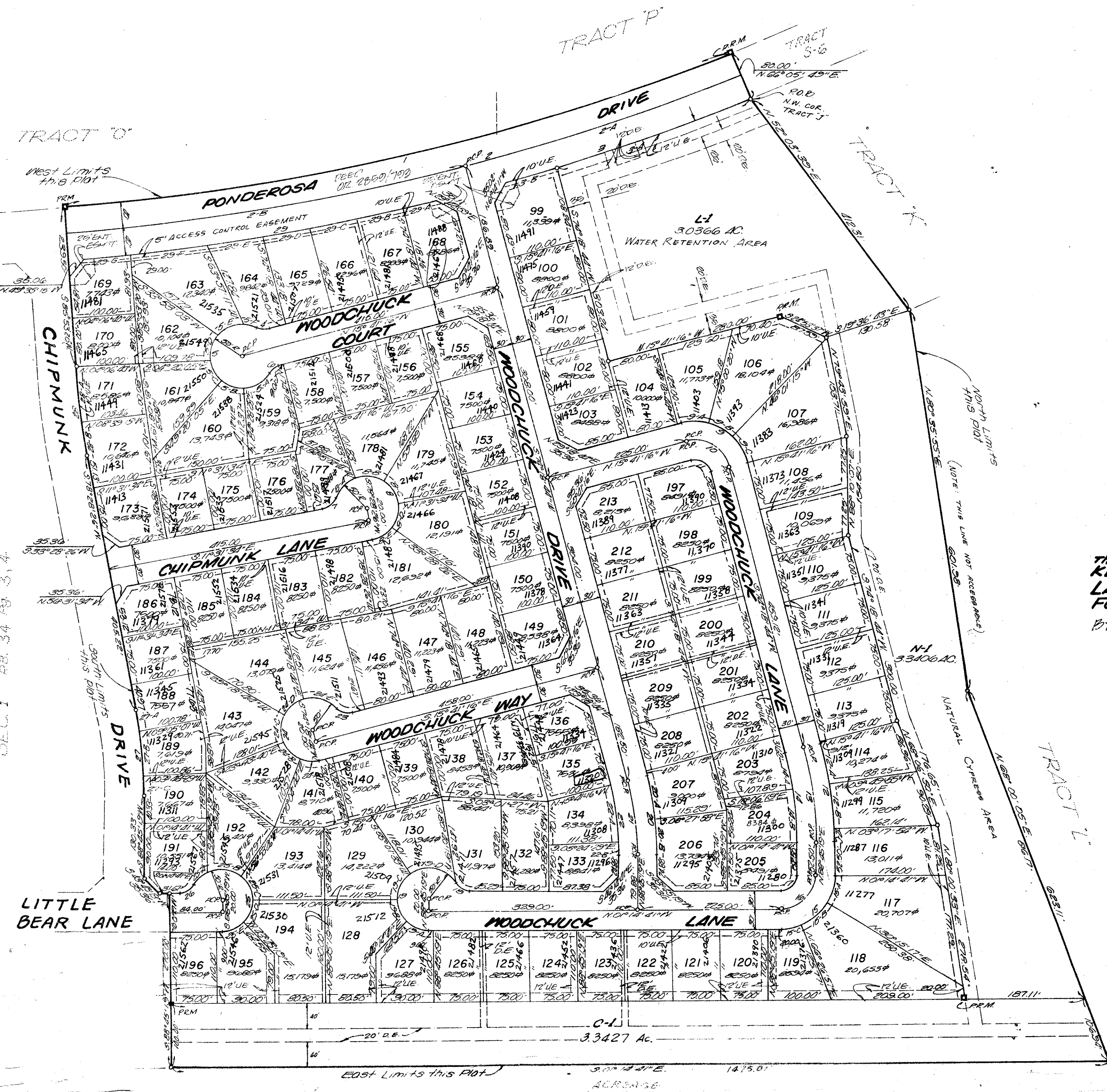


A PLANNED UNIT DEVELOPMENT

CIMARRON SECTION TWO

being a resubdivision of portions
of Tracts J and S-6 of
BOUNDARY PLAT OF ORACLE COUNTRY (PLAT BOOK 31, PAGES 175-180)
Section 23, Township 47 South, Range 41 East
Palm Beach County, Florida



U.E. denotes Utility Easement.
D.E. denotes Drainage Easement.

This instrument prepared by
KEITH and SCHNARS
LAND SURVEYING SCIENCES, P.A.
Fort Lauderdale, Florida
BY: THOMAS F. SCHLAGE, P.L.C. #2026

CURVE TABULATION					CURVE TABULATION				
NO.	RADIUS	DELTA	ARC	TANGENT	NO.	RADIUS	DELTA	ARC	TANGENT
1	3202.26	19° 15' 15"	1076.18	549.21	17	25.00	90° 00' 00"	25.00	25.00
2	3242.26	19° 15' 45"	1090.00	550.19	18	25.00	60° 10' 55"	21.53	15.05
2A	3242.26	05° 04' 04"	456.50	228.65	19	50.00	24° 10' 55"	21.53	—
2-B	3242.26	11° 11' 35"	633.46	317.74	19A	50.00	45° 00' 00"	39.27	20.71
3	3292.26	07° 07' 04"	407.76	204.14	19B	50.00	45° 00' 00"	39.27	20.71
3-A	3292.26	05° 57' 22"	382.28	161.24	19C	50.00	56° 16' 20"	39.11	26.74
3-B	3292.26	01° 29' 35"	85.53	42.77	19D	50.00	93° 54' 35"	33.20	55.44
4	25.00	28° 20' 00"	18.69	9.81	20	551.81	14° 26' 35"	139.09	69.54
5	50.00	26° 52' 00"	23.54	—	20A	551.81	07° 13' 17"	69.55	34.82
5A	50.00	32° 30' 00"	46.29	24.93	20B	551.81	07° 13' 17"	69.55	34.82
5B	50.00	26° 11' 27"	40.31	21.32	21	521.81	14° 26' 35"	131.54	64.12
5C	50.00	45° 00' 00"	39.27	20.71	22	491.81	14° 26' 35"	123.98	62.32
5D	50.00	45° 00' 00"	39.27	18.24	22A	491.81	10° 16' 47"	88.24	44.54
5E	50.00	32° 45' 00"	46.03	27.36	22B	491.81	04° 09' 48"	35.74	17.88
5F	50.00	28° 45' 50"	20.71	10.51	23	25.00	60° 10' 55"	21.53	15.05
6	25.00	62° 10' 55"	18.69	9.81	24	50.00	24° 10' 55"	21.53	—
7	25.00	62° 10' 55"	21.13	15.08	24A	50.00	39° 31' 31"	31.07	16.04
8	50.00	24° 10' 55"	21.53	—	24B	50.00	46° 21' 05"	40.45	21.41
8A	50.00	54° 16' 05"	47.36	23.62	24C	50.00	53° 02' 21"	46.29	24.55
8B	50.00	49° 07' 06"	43.45	23.20	24D	50.00	45° 00' 00"	39.27	20.71
8C	50.00	48° 07' 48"	42.00	22.33	24E	50.00	62° 10' 55"	21.53	30.15
8D	50.00	45° 00' 00"	39.27	20.71	25	50.00	24° 10' 55"	21.53	—
8E	50.00	45° 00' 00"	39.27	20.71	25A	50.00	34° 17' 41"	30.36	15.67
9	50.00	94° 00' 00"	156.52	78.00	25B	50.00	44° 14' 31"	43.88	23.89
9A	50.00	30° 41' 55"	18.24	9.12	25C	50.00	62° 32' 45"	49.56	26.39
9B	50.00	29° 32' 06"	17.50	8.75	25D	50.00	100° 00' 00"	50.00	50.00
9C	50.00	20° 10' 55"	10.51	5.25	25E	50.00	15° 20' 00"	39.27	20.71
10	50.00	20° 10' 55"	10.51	5.25	26	25.00	60° 10' 55"	21.53	15.05
11	25.00	20° 10' 55"	10.51	5.25	27	760.00	01° 16' 35"	186.35	68.37
12	613.84	14° 26' 35"	84.74	42.78	27A	760.00	02° 32' 41"	16.29	16.19
12A	613.84	05° 04' 04"	62.74	31.44	27B	760.00	05° 14' 38"	70.00	35.03
12B	613.84	06° 32' 02"	70.00	35.04	27C	760.00	02° 33' 48"	31.00	17.00
12C	613.84	08° 03' 13"	82.00	41.00	28	110.00	07° 24' 54"	15.65	7.93
13	583.84	14° 26' 35"	84.74	42.78	28A	110.00	02° 52' 20"	53.64	27.83
14	553.84	14° 26' 35"	82.96	41.78	28B	110.00	04° 32' 35"	58.01	28.03
14A	553.84	05° 31' 56"	53.96	27.00	29	3282.26	02° 52' 20"	53.64	28.03
14B	553.84	08° 54' 38"	85.65	42.91	29A	3282.26	01° 57' 59"	55.37	27.68
15	85.00	90° 00' 00"	133.52	66.76	29B	3282.26	01° 18' 38"	75.07	37.54
15A	85.00	31° 29' 50"	14.74	7.37	29C	3282.26	01° 18' 38"	75.07	37.54
15B	85.00	36° 11' 29"	17.70	8.85	30	3282.26	01° 18' 38"	75.07	37.54
15C	85.00	22° 48' 22"	13.09	6.59	30A	3282.26	01° 18' 38"	75.07	37.54
16	55.00	90° 00' 00"	55.00	27.50	30B	3282.26	01° 18' 38"	75.07	37.54

PB 35 Pg 140